

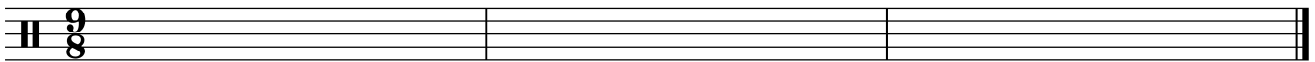
# Level 2 Aural Test 2

Name: \_\_\_\_\_

Class: \_\_\_\_\_

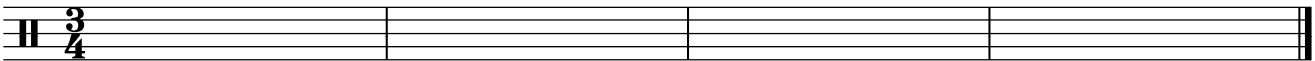
Mark: \_\_\_\_\_ / 32

## Q. 1 Rhythmic Dictation



(6 marks)

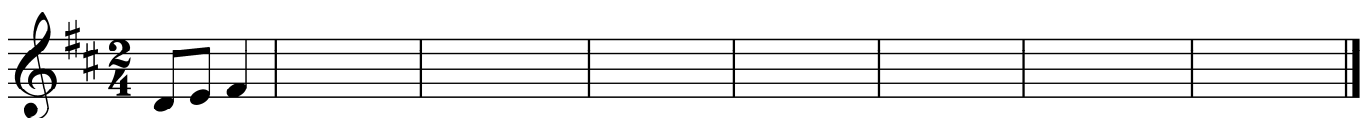
## Q. 2 Rhythmic Dictation



(8 marks)

## Q. 3 Melodic Dictation – Solfa and Staff

Write the solfa under the given rhythm (the first bar has been done for you) and then as notes on the staff.



(7 marks)

**Q.4**

Write the name of each interval played for you. Intervals will be played melodically, harmonically and then melodically again. Only minor 2nds, Major 2nds, Major 3rds and Perfect 8ves will be included.

1.                      2.                      3.                      4.                      5.

---

(5 marks)

**Q. 5**

Write the name of each triad played for you. Triads will be played melodically, harmonically and then melodically again. Only Major, minor, diminished and Augmented triads will be included.

1.                      2.                      3.                      4.                      5.

---

(5 marks)

**Q. 6 Aural Tonality Recognition**

Listen to a melody being played several times. A choice of two tonalities is given. Circle the tonality of the melody you hear.

Major                      natural minor

(2 marks)

**Q. 7**

Complete and use the following chart when answering **Q. 8**

Bass note – letter name	C						
<i>Bass note – solfa</i>	<i>d</i>						
Roman Numeral	I						

(3 marks)

**Q. 8**

A chord progression will be played several times. Write the bass notes, quality and Roman Numerals of each chord you hear into the **harmonic grid** below.

This chord progression will use **only chords I, ii, IV and V** in the key of C Major

Harmonic Grid	1.	2.	3.	4.
<b>Bass note</b>	do/C			
<b>Quality</b>	Major			
<b>Roman Numeral</b>	I			

(6 marks)

**Blank manuscript** (if required).

