

# Level 3 Section 1 - Scales Answers

## C Major in the Bass Clef



Click on this video icon and follow any instructions given in the video.



*do re mi fa so la ti do' ti la so fa mi re do*  
 C D E F G A B C B A G F E D C

## The Grand Staff

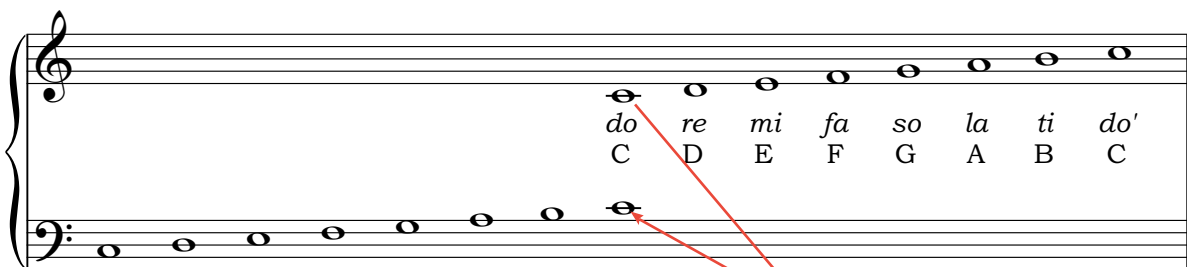


Click on this information sheet icon, for more information about the notes on the grand staff.



Click on this worksheet icon for more activities practicing naming notes in a scale.

The **Grand Staff** usually consists of a treble staff and a bass staff connected by a brace at the beginning.



*do re mi fa so la ti do'*  
 C D E F G A B C

*do, re, mi, fa, so, la, ti, do*  
 C D E F G A B C

These two notes look like they are a long way apart when in reality they are the same note.

We use an **apostrophe** (do') to indicate that a solfa note is in an upper octave. Similarly a **comma** (do,) beside a note's name indicates it is in a lower octave. Notice that solfa names are written in **lowercase** (usually in italics) and letter names are written in **UPPERCASE**.

## Level 3 Section 1 - Scales - Worksheet Answers

**S1 Scales 1** Using semibreves in the treble clef, write one octave (i.e. from middle C up to the next C), ascending and descending, of C Major.

(Musicianship & Aural Training for the Secondary School, Level 3 Books, Page 3, Q. 1).



**S1 Scales 2** Write the letter names beneath the given C Major scale.

(Musicianship & Aural Training for the Secondary School, Level 3 Books, Page 3, Q. 1).

