

Preparation Lesson 2 – Melodic Skills & Concepts from Level 1

Pitch

Pitch: the high and low sounds in music.

We show pitch using notes on a **staff**.


Staff (or stave): the group of five lines and four spaces used for writing music.



☞ Music written using notes on a staff, as in "Alleluia" below is called **staff notation**.

Alleluia

Treble Clef

 **Treble or G clef:** the symbol placed at the start of a piece of music, showing that the music has been written for treble or high voices or instruments.

☞ Note that the treble clef curls around the note "G", which is how it got its name.

Here are all the notes used in "Alleluia" above, written out, on the staff and in a tone ladder: from the lowest to the highest note.

We call this set of notes the **tone set** or **range**.

Alleluia Tone Set

☞ The **final** note of the melody (sometimes called the "**finalis**") is circled in a tone set.

☞ The lowest note: **middle C** has a short line through it because it is written off the staff. This line is called a **ledger** or **leger line**.



Letter Names

Notes can be named in several different ways.

We can use the first seven letters of the alphabet: A, B, C, D, E, F and G.

Alleluia Tone Set – Letter Names



Solfa

Notes can be named using **solfa** names.

Alleluia Tone Set – Solfa



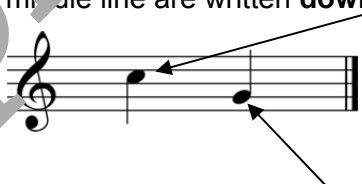
- ☞ Notice that when we write solfa names we use lower case letters and when we write letter names we use UPPER CASE (capital) letters.
- ☞ Notice also the apostrophe used to show high *do*.

Stem Direction Rule

- ☞ Stems for notes **on** the middle line may go **up** or **down**.



- ☞ Stems for notes **above** the middle line are written **down** before (the notehead).



- ☞ Stems for notes **below** the middle line are written **up** after (the notehead).

Handsigns

Each solfa note name has a matching handsign.

Solfa handsigns are used to physically show the notes in the air. *do* should be placed in front of your stomach and the others are each placed a little higher to show the way pitch moves.



See Appendix 3, page 166, for all the handsigns.

Melodic Sightreading Practice Instructions

There are many Melodic Sightreading Exercises throughout this book.

Follow these instructions for each exercise.

1. Learn and practice the rhythm of the exercise by following the "Rhythmic Sightreading Practice Instructions" on page 2.
2. Inner hear then sing the melody out loud in solfa showing the handsigns.
3. Inner hear then sing the melody out loud in letter names.
4. Practice the melody in a variety of ways e.g. inner hearing chosen letter names.

Melodic Sightreading 1

ta ta ta ta ti - ti
do do re re do re *etc*
C C D D C D

☞ Written solfa names can be shortened:

d r m

Melodic Sightreading 2

ta ta ta ta ta ta
d r d m r d
C D C E D C

☞ Music written using rhythmic shorthand with solfa names beneath is called **stick notation**.

d r m

Melodic Sightreading 3

d d d r r r d r m f s s s f m r m f r r d

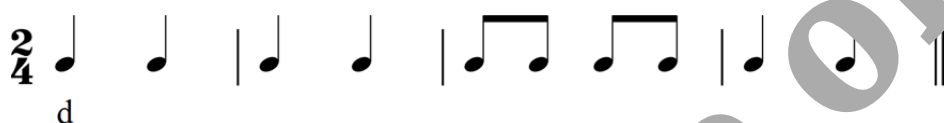
Melodic Sightreading 4

d d r r d r m f s m r r m m m f m r d d

Melodic Dictation – Solfa Practice Question Instructions

1. **Melodic Dictation – Solfa Practice Question** will be played several times. Before it begins, sing the notes that will be used in the dictation in solfa with handsigns (the tone set). The notes used in this dictation will be *do re* and *mi*.
2. During the first playing listen, point to the given rhythm and complete the solfa of the last few notes. (These remain in your memory after it has finished being played).
3. As you continue listening, complete the solfa you hear under the given rhythm.
4. Use the final playing to check your completed melody by singing the solfa in your head.
5. Once completed and corrected, sing through in solfa with handsigns.

Melodic Dictation – Solfa Practice Question



1/04

Q. 5 Theory Give definitions for the following terms.

Pitch: _____

Treble Clef: _____

Finalis: _____

Q. 6 Theory Complete the solfa and letter names below the notes in this melody.



1/05

Q. 7 Melodic Dictation – Solfa



1/06

Q. 8 Melodic Dictation – Solfa

