

# Section 1 - Chord Progressions

Video teaching this concept

Information sheet with additional information about concepts taught

## Recognition of a Bassline as a Melody

Recognising the **bassline** (lowest note of each chord) of a **chord progression** (a set of chords played one after another) is a necessary first step to recognising the whole chord.



If we take the C Major tonic triad, double the root (lowest) note and write this in the bass clef we have created a bassline to go with this chord.

Clear, concise academic information and explanations.

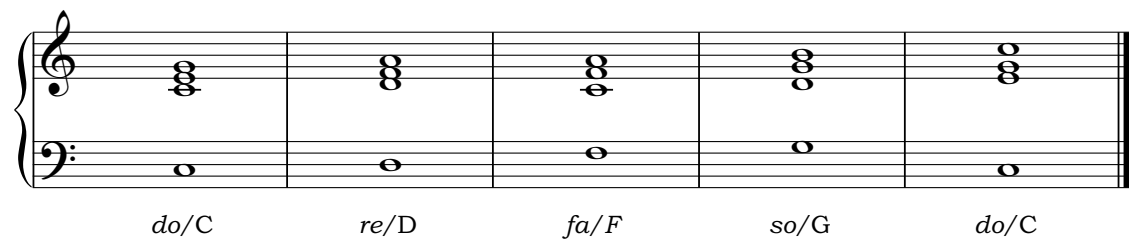
## Chord Progression with bassline

Examples designed for students to sing – helping to cement their understanding of the new concepts.

Listen to this chord progression and sing the bassline.

Note that while the top part does not always have the notes in a  $\frac{5}{3}$  or root position, the **lowest** note, in the bass clef, of each triad is the **root** note therefore the triad **is** a root position triad.

It is the bass or lowest note of a chord, often shown in the bass clef, that gives a chord its position e.g. root position.



Bass line Clever Echo Practice Video

Practise all chord progression examples and all completed and corrected transcription exercises by singing the bassline in solfa and letter names.

PDF of staff notation for teacher directed transcription exercises.

## Worksheet 6

Worksheet with theory and aural transcription exercises

Three chord progressions in the key of C Major will be played several times each. Write the solfa or letter names of the bassline for each chord played. *The Notation icon: [N] to the left of each exercise, links to the notation (on the staff) for this and following exercises and the Clever Echo icon: [CE] is the link for the practice video.*

Answers shaded in teacher book

### S1 Recognition of a Bassline 1

|           | Chord 1 | Chord 2 | Chord 3 | Chord 4 |
|-----------|---------|---------|---------|---------|
| Bass note | do/C    | ti/B    | do/C    | so/G    |

1/10

### S1 Recognition of a Bassline 2

|           | Chord 1 | Chord 2 | Chord 3 | Chord 4 |
|-----------|---------|---------|---------|---------|
| Bass note | do/C    | re/D    | ti/B    | do/C    |

CD track MP3 file for transcription exercises

1/11

### S1 Recognition of a Bassline 3

|           | Chord 1 | Chord 2 | Chord 3 | Chord 4 |
|-----------|---------|---------|---------|---------|
| Bass note | do/C    | so/G    | fa/F    | do/C    |

1/12