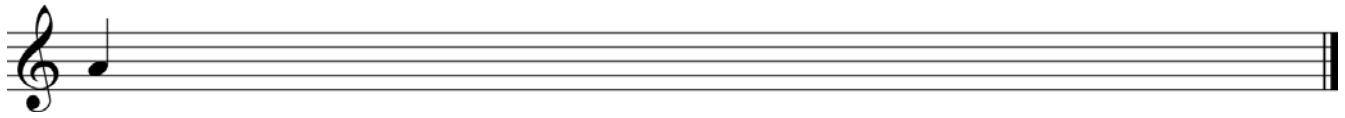


VMPC Scale Writing Sheet 3 – Major and Natural Minor Scales to 3 Sharps and Flats

For extra practice write the solfa and letter names beneath each note you write.

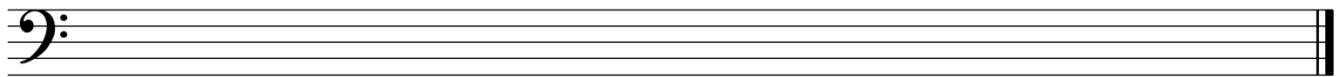
1. Write this Major scale, ascending and descending. Slur the pairs of notes that create tones.



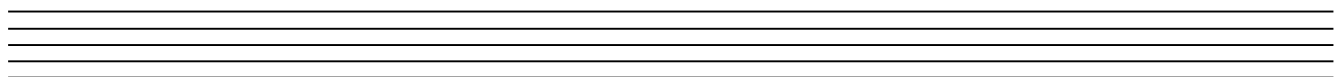
2. Write the F Major scale, ascending and descending, in quavers. Slur the pairs of notes that create semitones.



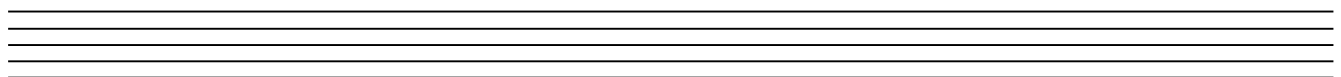
3. Write G Major using whole notes, ascending and descending, in the bass clef. Slur the pairs of notes that create Major 2nds. Do not use a key signature.



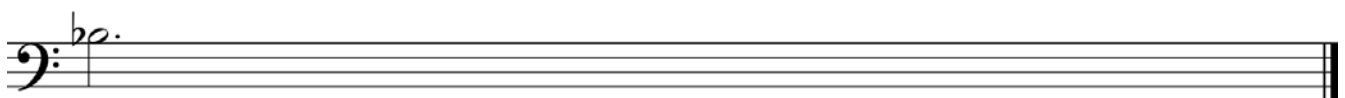
4. Write G natural minor in the treble clef, ascending only, in dotted minims. Use a key signature and circle the minor 2nds.



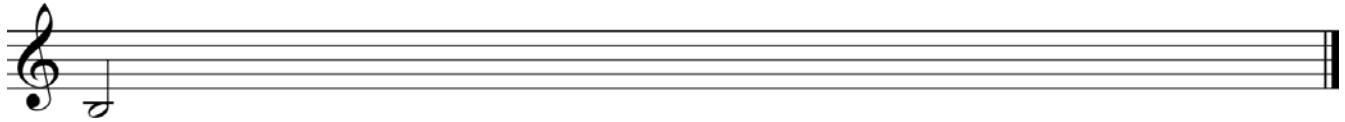
5. In the bass clef, write the G Major scale ascending and descending. Circle the pairs of notes that create semitones.



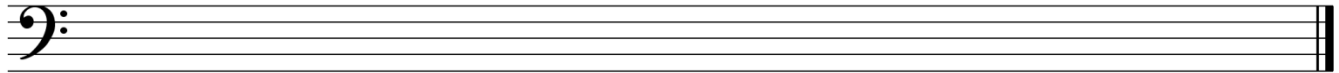
6. Write this Major scale, descending only, in quarter notes. Bracket the pairs of notes that create semitones.



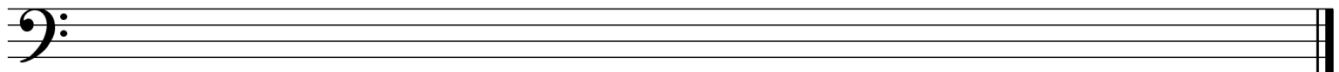
7. Write this natural minor scale, ascending only. Slur the pairs of notes that create tones. Do not use a key signature.



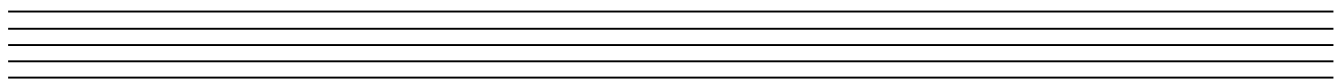
8. Write the C Major scale, ascending and descending, in minims. Slur the pairs of notes that create tones.



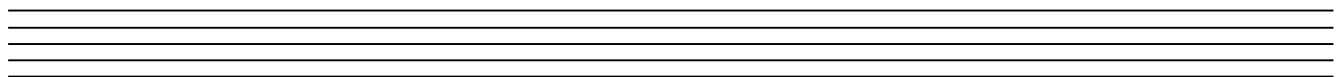
9. Write D Major using whole notes, ascending and descending, in the bass clef. Slur the pairs of notes that create semitones.



10. Write D natural minor in the treble clef, ascending only, in dotted minims. Use a key signature and slur the Major 2nds.



11. In the treble clef, write the C Major scale ascending and descending, in quavers. Circle the pairs of notes that create semitones.



12. Write the E natural minor scale, descending only, in quarter notes. Bracket the pairs of notes that create semitones.

