

# Music Theory Worksheet 1 Answers cont.

## Chords

### Question 8

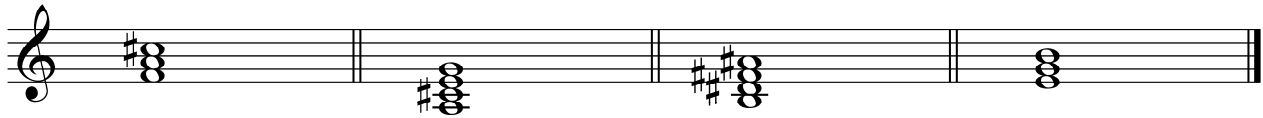
4 Marks – 1 mark for each correct answer



1. diminished 7      2. half diminished      3. Major      4. diminished

### Question 9

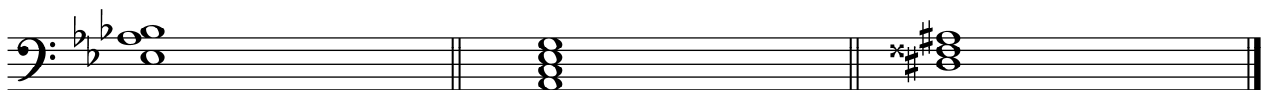
4 Marks – 1 mark for each correct answer



1. Augmented      2. Dominant 7      3. Major 7      4. minor

### Question 10

3 Marks – 1 mark for each correct answer



1. Eb Suspended 4      2. A minor 7      3. D# Major

# Music Theory Worksheet 1 cont.

## Chords

### Question 8

Identify each of the following chords from the listed alternatives.

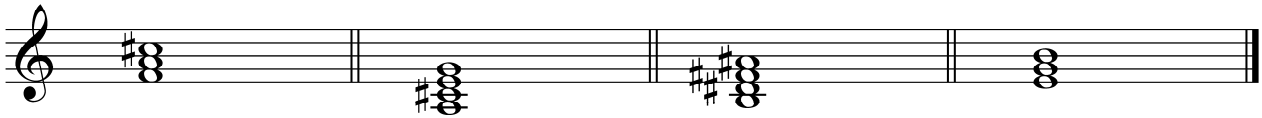
Major      minor 7      half diminished      Augmented      diminished 7      diminished



1. \_\_\_\_\_ 2. \_\_\_\_\_ 3. \_\_\_\_\_ 4. \_\_\_\_\_

### Question 9

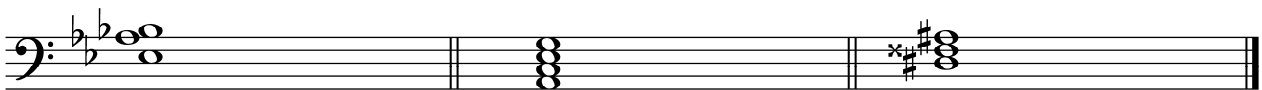
Identify the quality of each of the following chords.



1. \_\_\_\_\_ 2. \_\_\_\_\_ 3. \_\_\_\_\_ 4. \_\_\_\_\_

### Question 10

Identify the following chords by naming the note on which each is built and the quality.



1. \_\_\_\_\_ 2. \_\_\_\_\_ 3. \_\_\_\_\_

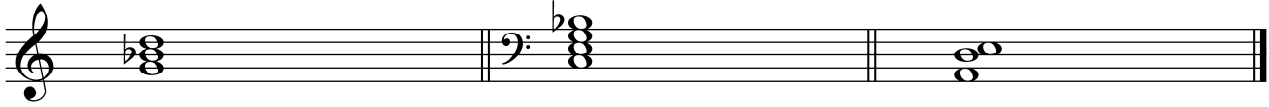
**Question 11**

3 Marks – 1 mark for each correct answer

G minor

C Dominant 7

A Suspended 4



**Question 12**

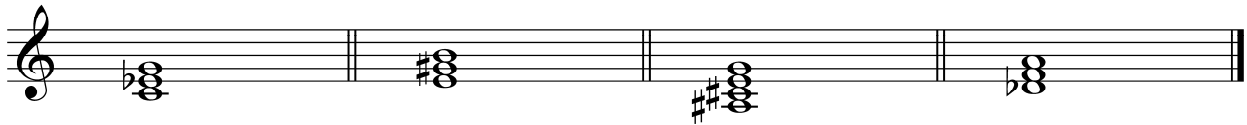
4 Marks – 1 mark for each correct answer

ii  
in B $\flat$  Major

V  
in A Major

vii<sup>o7</sup>  
in B minor

III<sup>+</sup>  
in B $\flat$  minor



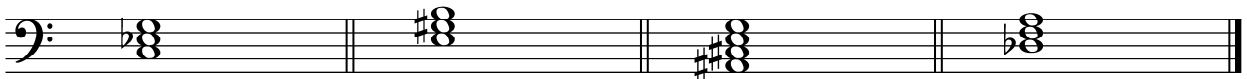
OR

ii  
in B $\flat$  Major

V  
in A Major

vii<sup>o7</sup>  
in B minor

III<sup>+</sup>  
in B $\flat$  minor



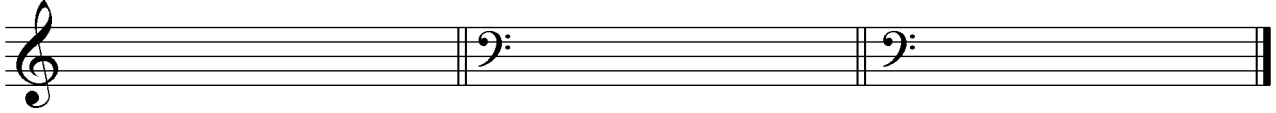
### Question 11

Write the chords indicated using the given clefs.

G minor

C Dominant 7

A Suspended 4



### Question 12

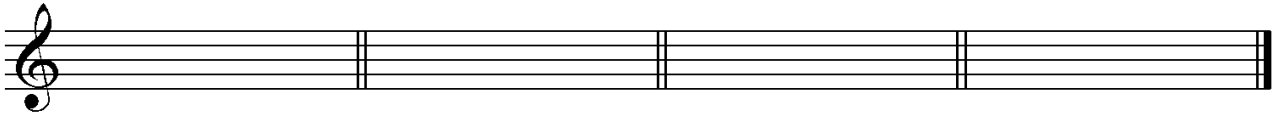
Write the following chords as they occur in the tonic keys indicated. You can select to write your answers in treble clef **or** bass clef – both clefs are provided.

ii  
in B $\flat$  Major

V  
in A Major

vii<sup>o7</sup>  
in B minor

III<sup>+</sup>  
in B $\flat$  minor



OR

ii  
in B $\flat$  Major

V  
in A Major

vii<sup>o7</sup>  
in B minor

III<sup>+</sup>  
in B $\flat$  minor

