

Level 2 Written Test 3

Name: _____

Class: _____

Mark: _____ / 48

Q. 1

Add barlines to these rhythms.

a.



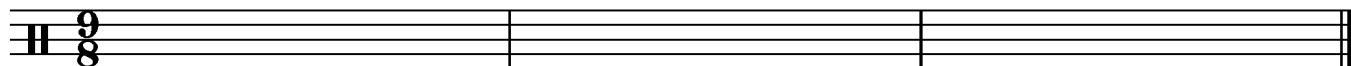
b.



(4 marks)

Q. 2

Rewrite this rhythm using correct note groupings.

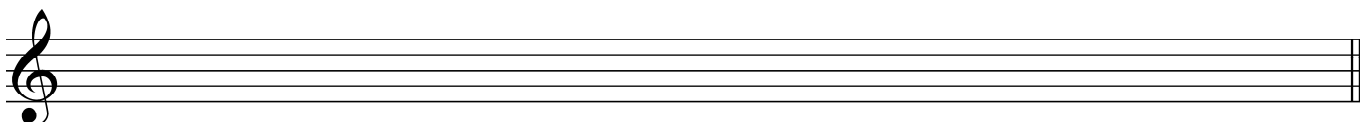


(3 marks)

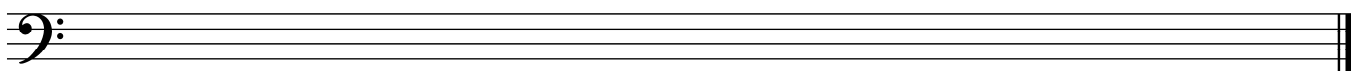
Q. 3

Write the following scales.

a. D (do) Major pentatonic, using accidentals, ascending and descending, in half notes.
Use slurs to show the pairs of notes that are a minor third apart.



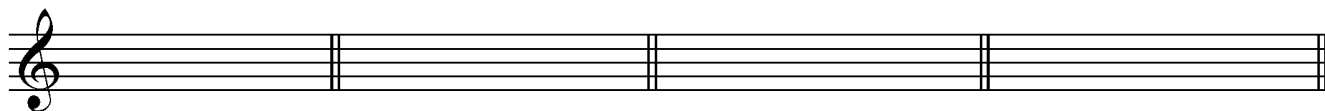
b. C Natural minor, using a key signature, ascending and descending, in semibreves.
Use slurs to show the pairs of notes that are a Major 2nd apart.



(4 marks)

Q. 4

Write the following minor key signatures.



B minor

G minor

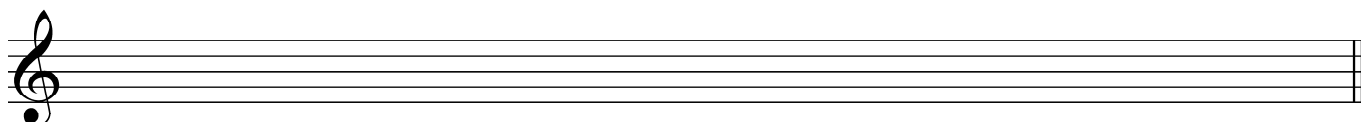
C minor

F# minor

(4 marks)

Q. 5

Write the following notes in F# harmonic minor.



Mediant

Submediant

Dominant

Subdominant

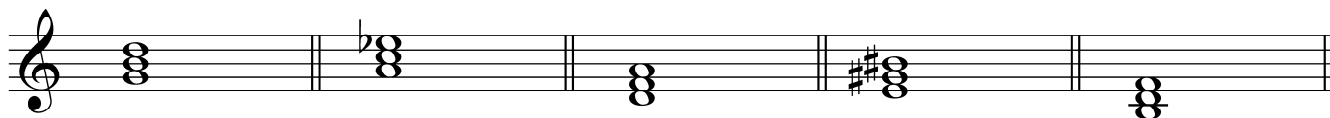
Tonic

Leading Note

(6 marks)

Q. 6

Name the quality of these triads.

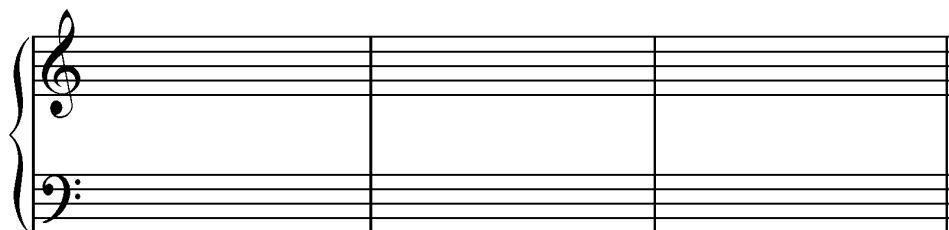


Major

(5 marks)

Q. 7

Write the **primary triads** found in the G harmonic minor scale using whole notes.
Use accidentals and write the letter names and Roman Numerals below each triad.



(6 marks)

Q. 8

Complete the following sentences:

In a Major key, the two chords that make up a **perfect** cadence are V and I

In a harmonic minor key, the two chords that make up a **perfect** cadence are V and i

In a Major key, the two chords that make up a **plagal** cadence are _____

In a harmonic minor key, the two chords that make up a **plagal** cadence are _____

In a Major key, the chords that make up an **imperfect** cadence are _____

In a harmonic minor key, the chords that make up an **imperfect** cadence are _____

(4 marks)

Q. 9

Complete the following chord charts.

a.

Bass note – letter name	C						
Bass note – solfa	1,						
Roman Numeral	i						

b.

Bass note – letter name	A						
Bass note – solfa	d						
Roman Numeral	I						

(12 marks)

Blank manuscript (if required).

Blank musical staff lines.

Blank musical staff lines.

Blank musical staff lines.

Blank musical staff lines.

Blank musical staff lines.

Blank musical staff lines.

Blank musical staff lines.

Blank musical staff lines.