

Written Test 2 – Teacher Information

Can be set after Lesson 21 has been completed

Written Test Answers

Q. 1

Study the following song then answer the questions below.

a) Write the rhythmic form of the above song in the boxes beside each phrase. (4 marks)

b) Write the tone set of the above melody on the staff below. (3 marks)

c) This song is based on the F *do* pentatonic scale. Write this scale out fully (ascending and descending, repeating the top note). Write the letter names beneath the notes. (3 marks)

d) Write this same scale in a C *do* on the staff provided below. Write the solfa beneath the notes. (3 marks)

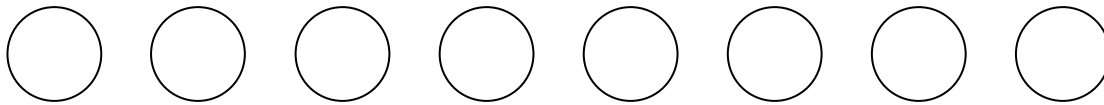
e) In the song at the top of this page circle one example of a Major 2nd and slur one example of a minor 3rd. (2 marks)

f) In the song at the top of this page, write the solfa beneath the notes in bars 1 and 2 and the letter names beneath the notes in bars 7 and 8. (4 marks)

(Total of 19 marks)

Q. 2

Write eight beats of interesting rhythm in the beat circles below.



(4 marks)

Q. 3

Add a note or notes to complete these bars.



(4 marks)

Q. 4

Add a rest or rests to complete these bars.



(4 marks)

Q. 5

- a) Write the tone set of this song below.
- b) Write the solfa beneath the notes in the song.

A musical staff in 2/4 time with a treble clef. The notes are: quarter note G4, quarter note A4, eighth note B4, eighth note B4, quarter note A4, quarter note G4, eighth note F4, eighth note F4, quarter note G4, quarter note A4, quarter note B4. Below the staff are the solfa letters: d, r, m, m, r, m, m, s, m, r, d.

A musical staff in 2/4 time with a treble clef. The notes are: quarter note G4, quarter note A4, eighth note B4, eighth note B4, quarter note A4, quarter note G4. Below the staff are the solfa letters: d, r, m, s.

- c) Transpose the above song into a C do using the blank tone set given below.

A musical staff in 2/4 time with a treble clef. The notes are: quarter note C4, quarter note D4, eighth note E4, eighth note E4, quarter note D4, quarter note C4, eighth note E4, eighth note E4, quarter note G4, quarter note F4, quarter note E4, quarter note D4, quarter note C4. Below the staff are the letter names: C, D, E, E, D, E, E, G, E, D, C.

A musical staff in 2/4 time with a treble clef. The notes are: quarter note C4, quarter note D4, eighth note E4, eighth note E4, quarter note D4, quarter note C4. Below the staff are the solfa letters: d, r, m, s.

- d) Write the letter names beneath the notes of the C do version.

(10 marks)

Q. 6

Give a meaning for the following terms.

Moderato At a moderate speed or pace

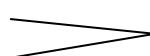
Andante At an easy walking pace

(2 marks)

Q. 7

Give the full Italian word and the meaning for the following performance indications.

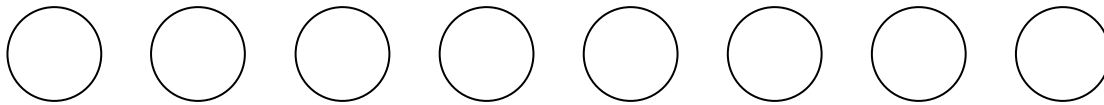
p piano meaning soft

 crescendo meaning gradually get louder

(2 marks)

Q. 2

Write eight beats of interesting rhythm in the beat circles below.



(4 marks)

Q. 3

Add a note or notes to complete these bars.



(4 marks)

Q. 4

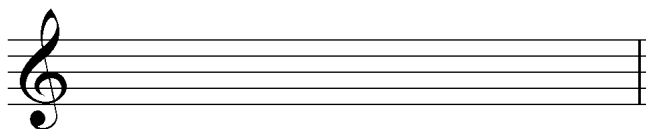
Add a rest or rests to complete these bars.



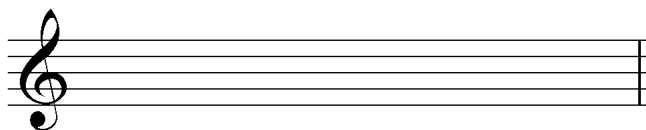
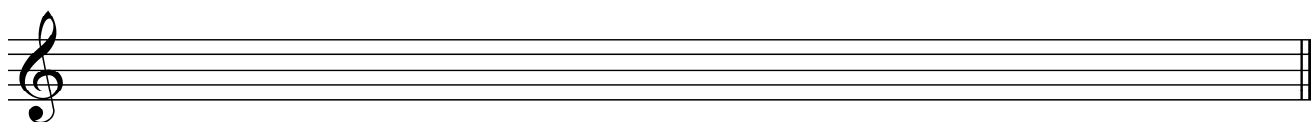
(4 marks)

Q. 5

- a) Write the tone set of this song below.
- b) Write the solfa beneath the notes in the song.



- c) Transpose the above song into a C *do* using the blank tone set given below.



- d) Write the letter names beneath the notes of the C *do* version.

(10 marks)

Q. 6

Give a meaning for the following terms.

Moderato _____

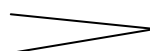
Andante _____

(2 marks)

Q. 7

Give the full Italian word and the meaning for the following performance indications.

p _____

 _____

(2 marks)

Blank manuscript (if required).

