

Written Test 4 – Teacher Information

Can be set after Lesson 40 has been completed

Written Test Answers

Q. 1

Add time signatures to the following bars.



(3 marks)

Q. 2

Add a rest or rests to the following bars.



(3 marks)

Q. 3

Add notes to the following bars.



(3 marks)

Q. 4

Write the three *la* pentatonic scales you have learned so far on the staves below.



(3 marks)

Q. 5

Write the following stick notation as staff notation on the staff below in a G do.

(5 marks)

Q. 6

Study the following song then answer the questions below.

a) Write the tone set of the above melody on the staff below. (3 marks)

b) What scale is the tone set you have just written? The do pentatonic scale (F do) (3 marks)

c) Write this scale out fully. Write the solfa beneath the notes. (3 marks)

d) Write this same scale in a C *do* on the staff provided below. Write the letter names beneath the notes.

(3 marks)



e) In the **Q. 6** song circle one example of a Major 2nd and slur one example of a Major 3rd. (2 marks)

f) In the **Q. 6** song, write the solfa beneath the notes in bar 2 and the letter names beneath the notes in bar 3. (4 marks)

g) Sing the song through in your head and mark the phrases with slurs. (2 marks)

h) Add a word to the start of the **Q. 6** song to show it should be played in a fast and lively manner. (1 mark)

i) Add a word to bar 4 of the **Q. 6** song to show it should gradually slow down. (1 mark)

j) Add dynamics to show that the **Q. 6** song should start moderately softly, get gradually louder in bar 2, then gradually softer in bar 3 and should be soft in bar 4. (4 marks)

k) Transpose the **Q. 6** song into a G *do* on the staff below. (8 marks)



(Total of 34 marks)

Written Test 4

Name: _____

Class: _____

Due Date: _____

Mark: _____ / 54 (Including 3 marks for neatness)

Q. 1

Add time signatures to the following bars.



(3 marks)

Q. 2

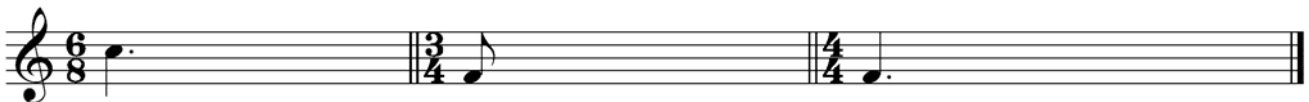
Add a rest or rests to the following bars.



(3 marks)

Q. 3

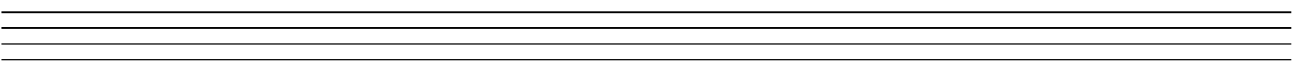
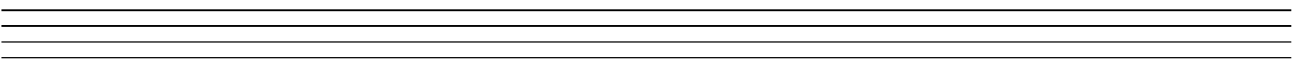
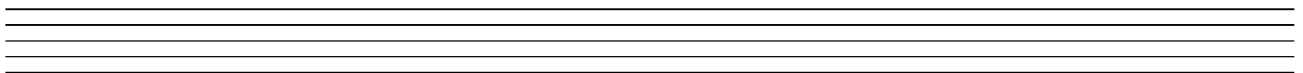
Add notes to the following bars.



(3 marks)

Q. 4

Write the three *la* pentatonic scales you have learned so far on the staves below.



(3 marks)

Q. 5

Write the following stick notation as staff notation on the staff below in a G do.

The image shows stick notation for a melody in 6/8 time. The notes are: l, d r m r d | m l l | l s m r d | l, d l, . Below the stick notation is a blank musical staff with a treble clef and a 6/8 time signature.

(5 marks)

Q. 6

Study the following song then answer the questions below.

The image shows two staves of musical notation in 4/4 time. The first staff contains a melody of quarter and eighth notes. The second staff contains a bass line with eighth and quarter notes.

b) Write the tone set of the above melody on the staff below. (3 marks)

A blank musical staff with five lines, intended for writing the tone set of the melody.

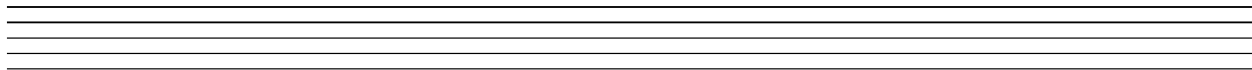
b) What scale is the tone set you have just written? _____ (3 marks)

c) Write this scale out fully. Write the solfa beneath the notes. (3 marks)

A blank musical staff with five lines, intended for writing the scale and solfa.

d) Write this same scale in a C *do* on the staff provided below. Write the letter names beneath the notes.

(3 marks)



e) In the **Q. 6** song circle one example of a Major 2nd and slur one example of a Major 3rd. (2 marks)

f) In the **Q. 6** song, write the solfa beneath the notes in bar 2 and the letter names beneath the notes in bar 3. (4 marks)

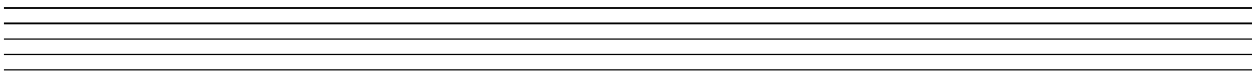
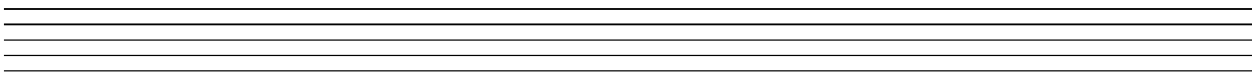
g) Sing the song through in your head and mark the phrases with slurs. (2 marks)

h) Add a word to the start of the **Q. 6** song to show it should be played in a fast and lively manner. (1 mark)

i) Add a word to bar 4 of the **Q. 6** song to show it should gradually slow down. (1 mark)

j) Add dynamics to show that the **Q. 6** song should start moderately softly, get gradually louder in bar 2, then gradually softer in bar 3 and should be soft in bar 4. (4 marks)

k) Transpose the **Q. 6** song into a G *do* on the staff below. (8 marks)



(Total of 34 marks)

Blank manuscript (if required).

