

Written Test 3 – Teacher Information

Can be set after Lesson 32 has been completed

Written Test Answers

Q. 1

Complete the following table.

Note	English Name	American Name	Rhythm Name	Rest Equivalent
	Crotchet	Quarter Note	ta	
 or 	Quaver	Eighth Note	ti-ti or ti	
 or 	Semiquaver	Sixteenth Note	tika-tika or tik	
	Quaver/Semiquavers	Eighth Note/Sixteenth Notes	ti-tika	
	Semiquavers/Quaver	Sixteenth Notes/Eighth Note	tika-ti	
	Minim	Half Note	to-o	
	Dotted Minim	Dotted Half Note	to-o-o	
	Semibreve	Whole Note	to-o-o-o	
	Dotted Crotchet/ Quaver	Dotted Quarter Note/Eighth Note	tam-ti	
	Quaver/Crotchet/ Quaver	Eighth Note/Quarter Note/Eighth Note	syn-co-pa	

(10 marks)

Q. 2

Write the three *do* pentatonic scales you have learned so far on the staves below.

A musical staff in treble clef with a key signature of one flat (Bb). The notes are: D4, E4, F4, G4, A4, Bb4, C5, Bb4, A4, G4, F4, E4, D4. Below the staff are the solfège syllables: d r m s l d' d' l s m r d.

A musical staff in treble clef with a key signature of one flat (Bb). The notes are: D4, E4, F4, G4, A4, Bb4, C5, Bb4, A4, G4, F4, E4, D4. Below the staff are the solfège syllables: d r m s l d' d' l s m r d.

A musical staff in treble clef with a key signature of one flat (Bb). The notes are: D4, E4, F4, G4, A4, Bb4, C5, Bb4, A4, G4, F4, E4, D4. Below the staff are the solfège syllables: d r m s l d' d' l s m r d.

(3 marks)

Q. 3

Give a meaning for the following terms.

Interval The description of the distance in pitch from one note to another

Tempo Speed

Scale A group of notes used by composers as a basis for a piece of music

Adagio Means to play slowly

(4 marks)

Q. 4

Study the following song then answer the questions below.

Andante

A musical score in 3/4 time, treble clef, key signature of one flat (Bb). The tempo is marked 'Andante'. The first staff has notes: D4, E4, F4, G4, A4, Bb4, C5, Bb4, A4, G4, F4, E4, D4. The lyrics are: d r m s m r. The second staff has notes: D4, E4, F4, G4, A4, Bb4, C5, Bb4, A4, G4, F4, E4, D4. The lyrics are: A G F D. Dynamics include *p* and *f*, and a *cresc.* marking.

a) Write the tone set of the above melody on the staff below. (3 marks)

A musical staff in treble clef with a key signature of one flat (Bb). The notes are: D4, E4, F4, G4, A4, Bb4. Below the staff are the solfège syllables: l, d r m s l.

b) What scale is the tone set you have just written? The /a pentatonic scale (F do) (3 marks)

c) Write this scale out fully. Write the solfa beneath the notes. (3 marks)



d) Write this same scale in a G do on the staff provided below. Write the letter names beneath the notes. (3 marks)



e) In the Q. 4 song circle one example of a Major 2nd and slur one example of a minor 3rd. (2 marks)

f) In the Q. 4 song, write the solfa beneath the notes in bars 1 and 2 and the letter names beneath the notes in bars 7 and 8. (4 marks)

g) Put a square around the anacrusis. (1 mark)

h) Add a word to the start of the Q. 4 song to show it should be played at an easy walking pace. (1 mark)

i) Add dynamics to show that the Q. 4 song should start softly, get gradually louder in bar 5 and should be loud from bar 6 to the end. (3 marks)

j) Continue to transpose the Q. 4 song into a G do on the staff below. (8 marks)



(Total of 31 marks)

Written Test 3

Name: _____













Class: _____

Due Date: _____

Mark: _____ / 58 (Including 3 marks for neatness)

Q. 1

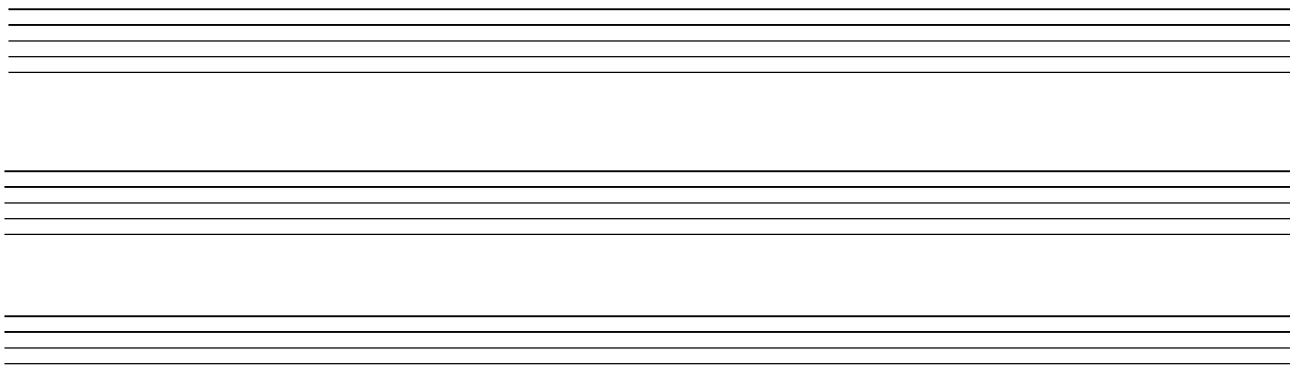
Complete the following table.

Note	English Name	American Name	Rhythm Name	Rest Equivalent
		Quarter Note	ta	
	Quaver		ti-ti or ti	
	Semiquaver	Sixteenth Note	tika-tika or tik	
	Quaver/Semiquavers	Eighth Note/Sixteenth Notes		  
	Semiquavers/Quaver		tika-ti	  
	Minim	Half Note	to-o	
		Dotted Half Note	to-o-o	
	Semibreve	Whole Note	to-o-o-o	
	Dotted Crotchet/ Quaver	Dotted Quarter Note/Eighth Note	tam-ti	 
	Quaver/Crotchet/ Quaver	Eighth Note/Quarter Note/Eighth Note		  

(10 marks)

Q. 2

Write the three *do* pentatonic scales you have learned so far on the staves below.



(3 marks)

Q. 3

Give a meaning for the following terms.

Interval _____

Tempo _____

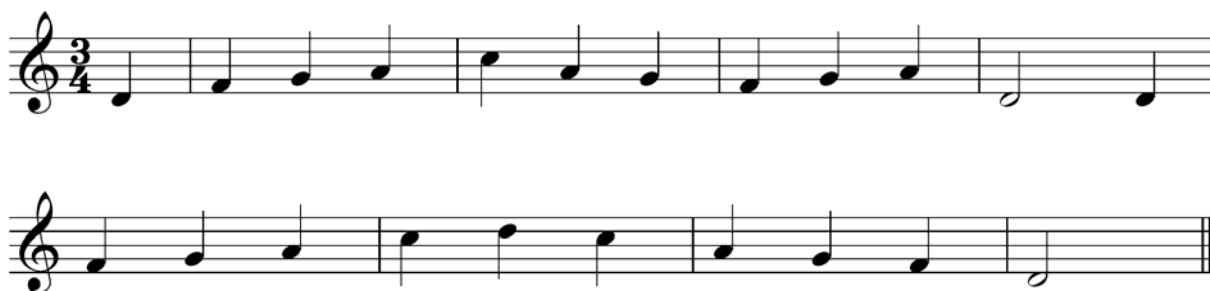
Scale _____

Adagio _____

(4 marks)

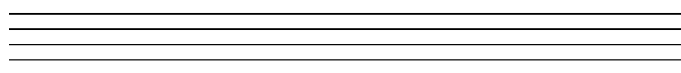
Q. 4

Study the following song then answer the questions below.



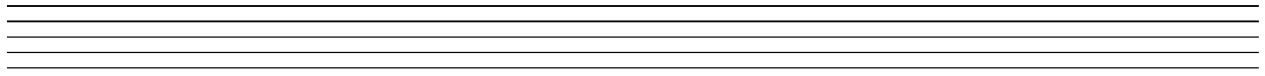
b) Write the tone set of the above melody on the staff below.

(3 marks)

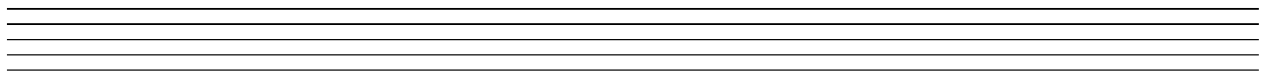


b) What scale is the tone set you have just written? _____ (3 marks)

c) Write this scale out fully. Write the solfa beneath the notes. (3 marks)



d) Write this same scale in a G *do* on the staff provided below. Write the letter names beneath the notes. (3 marks)



e) In the **Q. 4** song circle one example of a Major 2nd and slur one example of a minor 3rd. (2 marks)

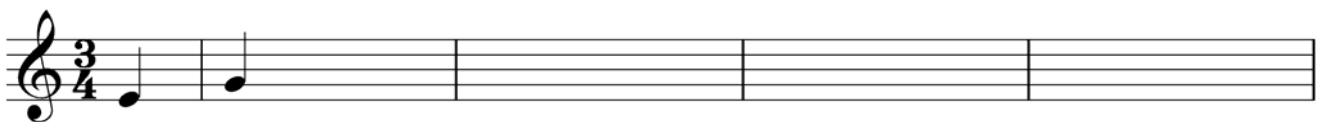
f) In the **Q. 4** song, write the solfa beneath the notes in bars 1 and 2 and the letter names beneath the notes in bars 7 and 8. (4 marks)

g) Put a square around the anacrusis. (1 mark)

h) Add a word to the start of the **Q. 4** song to show it should be played at an easy walking pace. (1 mark)

i) Add dynamics to show that the **Q. 4** song should start softly, get gradually louder in bar 5 and should be loud from bar 6 to the end. (3 marks)

j) Continue to transpose the **Q. 4** song into a G *do* on the staff below. (8 marks)



(Total of 31 marks)

Blank manuscript (if required).

