

# Written Test 2 – Teacher Information

Can be set after Lesson 21 has been completed

## Written Test Answers

### Q. 1

Study the following song then answer the questions below.

d d d d r r m s s

A

A

B

F A C D F C F

C

a) Write the rhythmic form of the above song in the boxes beside each phrase. (4 marks)

b) Write the tone set of the above melody on the staff below. (3 marks)

d r m s l d'

c) This song is based on the F *do* pentatonic scale. Write this scale out fully (ascending and descending, repeating the top note). Write the letter names beneath the notes. (3 marks)

F G A C D F F D C A G F

d) Write this same scale in a C *do* on the staff provided below. Write the solfa beneath the notes. (3 marks)

d r m s l d' d' l s m r d

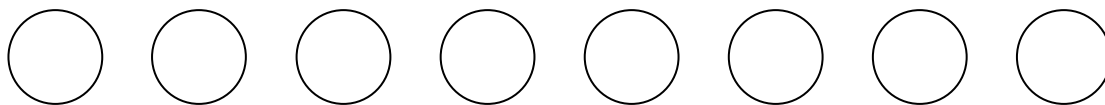
e) In the above song circle one example of a Major 2nd and slur one example of a minor 3rd. (2 marks)

f) In the above song, write the solfa beneath the notes in bars 1 and 2 and the letter names beneath the notes in bars 7 and 8. (4 marks)

(Total of 19 marks)

**Q. 2**

Write eight beats of interesting rhythm in the beat circles below.



(4 marks)

**Q. 3**

Add a note or notes to complete these bars.



(4 marks)

**Q. 4**

Add a rest or rests to complete these bars.



(4 marks)

**Q. 5**

- a) Write the tone set of this song below.
- b) Write the solfa beneath the notes in the song.

A musical staff in 2/4 time with a treble clef. The notes are: quarter note G4, quarter note A4, eighth note B4, eighth note B4, quarter note A4, quarter note G4, eighth note F4, eighth note F4, quarter note G4, quarter note A4, quarter note B4. Below the staff are the letters: d, r, m, m, r, m, m, s, m, r, d.

A musical staff in 2/4 time with a treble clef. The notes are: quarter note G4, quarter note A4, quarter note B4, quarter note C5. The first note G4 is circled. Below the staff are the letters: d, r, m, s.

- c) Transpose the above song into a C do using the blank tone set given below.

A musical staff in 2/4 time with a treble clef. The notes are: quarter note C4, quarter note D4, eighth note E4, eighth note E4, quarter note D4, quarter note C4, eighth note E4, eighth note E4, quarter note G4, quarter note F4, quarter note E4, quarter note D4, quarter note C4. Below the staff are the letters: C, D, E, E, D, E, E, G, E, D, C.

A musical staff in 2/4 time with a treble clef. The notes are: quarter note C4, quarter note D4, quarter note E4, quarter note F4. The first note C4 is circled. Below the staff are the letters: d, r, m, s.

- d) Write the letter names beneath the notes of the C do version.

(10 marks)

**Q. 6**

Give a meaning for the following terms.

Moderato At a moderate speed or pace

Andante At an easy walking pace

(2 marks)

**Q. 7**

Give the full Italian word and the meaning for the following performance indications.

*p* piano meaning soft

 crescendo meaning gradually get louder

(2 marks)

# Written Test 2

Name: \_\_\_\_\_

Class: \_\_\_\_\_

Due Date: \_\_\_\_\_

Mark: \_\_\_\_\_ / 48 (Including 3 marks for neatness)

## Q. 1

Study the following song then answer the questions below.

The first staff shows a melody starting on G4, moving up stepwise to D5, then down to C5, B4, and A4. The second staff continues from A4, moving up to B4, C5, D5, and E5. The third staff continues from E5, moving down to D5, C5, B4, and A4. The fourth staff continues from A4, moving up to B4, C5, and D5, ending with a double bar line.

- c) Write the rhythmic form of the above song in the boxes beside each phrase. (4 marks)
- d) Write the tone set of the above melody on the staff below. (3 marks)

- c) This song is based on the F *do* pentatonic scale. Write this scale out fully (ascending and descending, repeating the top note). Write the solfa beneath the notes. (3 marks)

The staff contains a single quarter note on D4, with the letter 'd' written below it.

- d) Write this same scale in a C *do* on the staff provided below. Write the solfa beneath the notes. (3 marks)

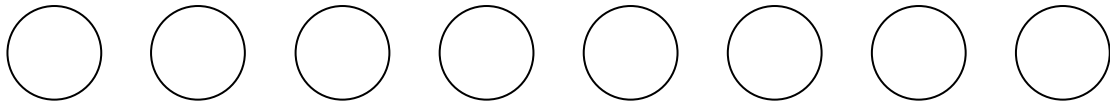
The staff contains a single quarter note on C4, with the letter 'd' written below it.

- e) In the above song circle one example of a Major 2nd and slur one example of a minor 3rd. (2 marks)
- f) In the above song, write the solfa beneath the notes in bars 1 and 2 and the letter names beneath the notes in bars 7 and 8. (4 marks)

(Total of 19 marks)

**Q. 2**

Write eight beats of interesting rhythm in the beat circles below.



(4 marks)

**Q. 3**

Add a note or notes to complete these bars.



(4 marks)

**Q. 4**

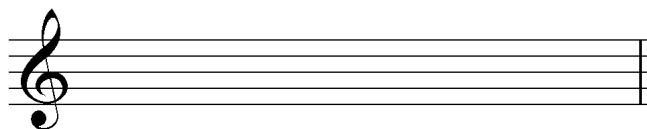
Add a rest or rests to complete these bars.



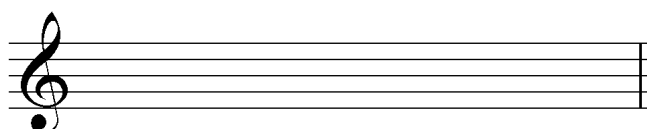
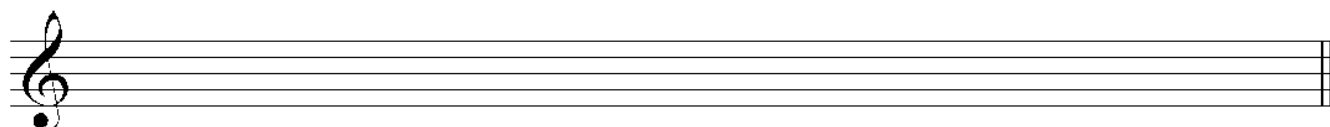
(4 marks)

**Q. 5**

- a) Write the tone set of this song below.
- b) Write the solfa beneath the notes in the song.



- c) Transpose the above song into a C *do* using the blank tone set given below.



- d) Write the letter names beneath the notes of the C *do* version.

(10 marks)

**Q. 6**

Give a meaning for the following terms.

Moderato \_\_\_\_\_

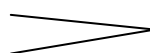
Andante \_\_\_\_\_

(2 marks)

**Q. 7**

Give the full Italian word and the meaning for the following performance indications.

*p* \_\_\_\_\_

 \_\_\_\_\_

(2 marks)

**Blank manuscript** (if required).

