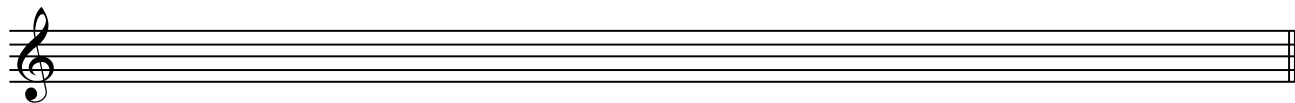


Keys – Supplementary Sheet 1. Major Scales.

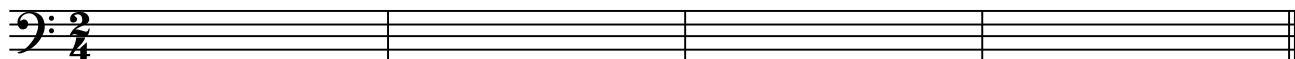
Keys Question 1

Using the treble clef, write one octave (i.e. from middle C up to the next C), ascending and descending, in crotchets, of C Major.



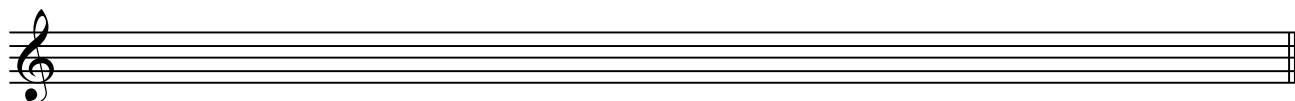
Keys Question 2

Compose a simple melody (using only crotchets and quavers) on the given staff in C Major.



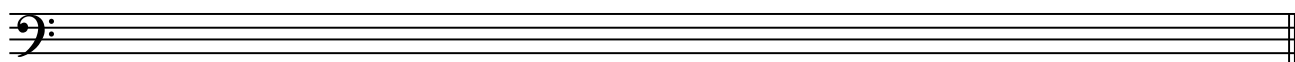
Keys Question 3

Using the interval pattern of the Major scale as the template, write the Major scale that begins on B_♭. Use a key signature.



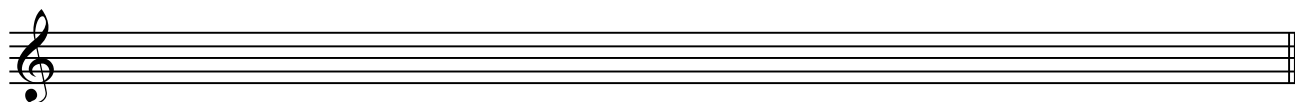
Keys Question 4

Write E_♭ Major. Use a key signature.



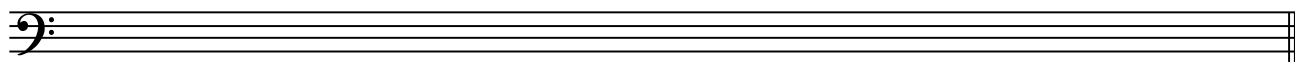
Keys Question 5

Write two octaves of A Major **without** a key signature (i.e. use accidentals where necessary).



Keys Question 6

Write the G Major scale in the bass clef. Use whole notes and write the solfa names beneath each note.



Keys Question 7

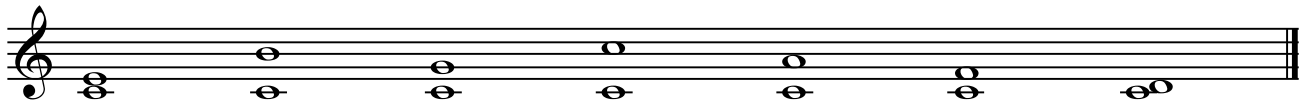
Write the name of the Major keys with these key signatures below each bar.



Intervals – Supplementary Sheet 2. Major, Perfect & Minor Intervals.

Intervals Question 1

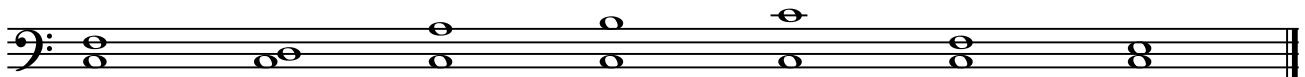
Name these intervals. The first has been done for you. (Note that the bottom note is always C and the top notes are all found in the C Major scale).



Major 3rd

Intervals Question 2

Name these intervals.



Perfect 4th

Intervals Question 3

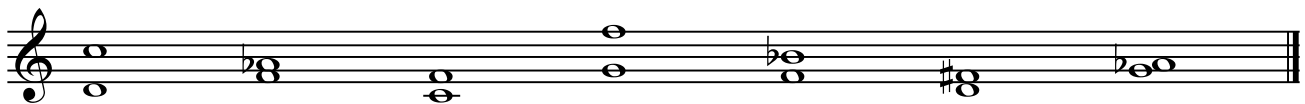
Name these intervals.



minor 6th

Intervals Question 4

Name these intervals. (Note that the bottom note changes for each interval).



minor 7th

Intervals Question 5

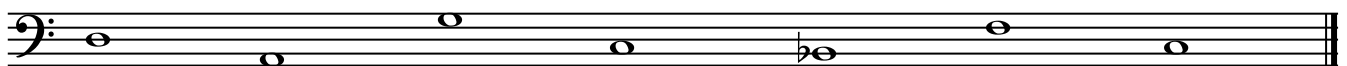
Write these intervals above the given notes.



Maj 7th Maj 3rd Per 5th Per 4th min 7th Maj 6th Aug 2nd

Intervals Question 6

Write these intervals above the given notes.

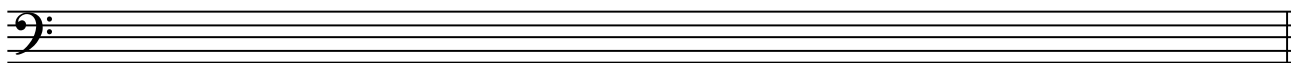


min 7th Maj 3rd Per 5th min 3rd min 7th Maj 6th Aug 2nd

Keys – Supplementary Sheet 3. Natural and Harmonic Minor Scales.

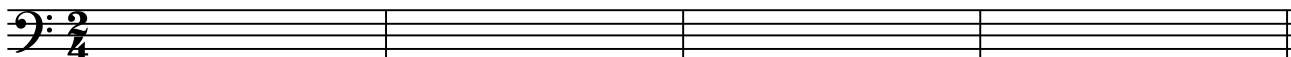
Keys Question 1

On the given staff, write one octave, ascending and descending, in quarter notes, of the natural minor scale with 2 sharps in the key signature.



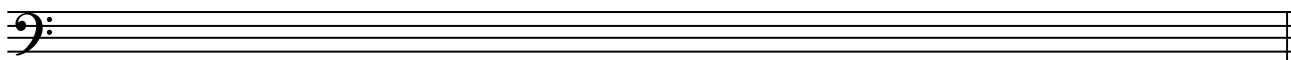
Keys Question 2

Compose a simple melody (using only crotchets, quavers and semiquavers) on the given staff in F# natural minor.



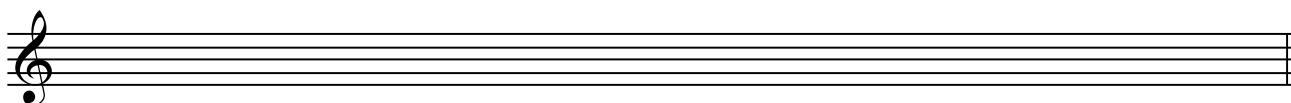
Keys Question 3

Write the natural minor scale that begins on A, ascending and descending, on the given staff. Use quarter notes and mark the semitones with slurs.



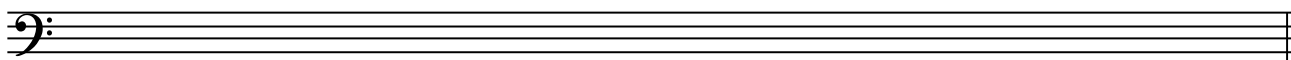
Keys Question 4

Write E harmonic minor. Use a key signature.



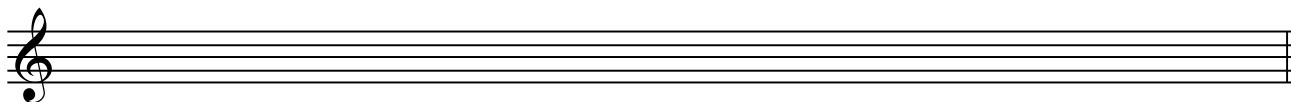
Keys Question 5

Write the harmonic minor scale that is related to B^b Major on the given staff. Use semibreves.



Keys Question 6

Without a key signature (i.e. using accidentals to show the required sharps and flats), write the D harmonic minor scale on the staff below.



Keys Question 7

Write the name of the minor keys with these key signatures below each bar.



Keys – Supplementary Sheet 4. Major Triads.

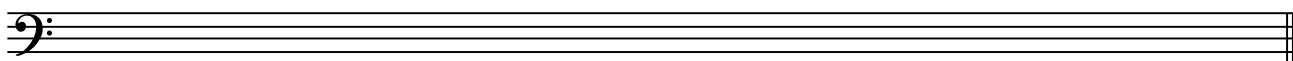
Chords Question 1

Using the treble clef, write three Major triads built on C (i.e. C Major tonic triads). Write each one in a different octave using semibreves.



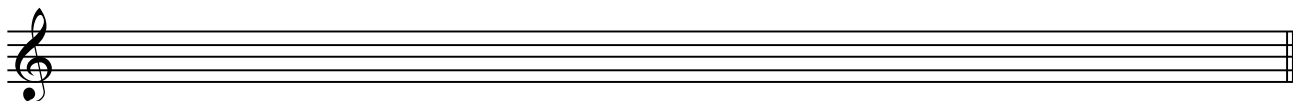
Chords Question 2

Using the bass clef, write three C Major tonic triads. Write each one in a different octave using whole notes.



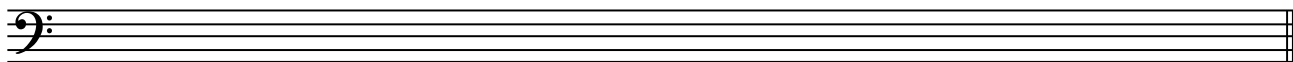
Chords Question 3

Using the treble clef, write three Major triads built on B^b. Write each one in a different octave using semibreves. Use accidentals where necessary.



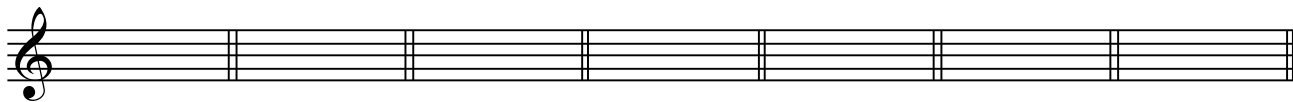
Chords Question 4

Using the bass clef, write two tonic triads in the key of F Major and two tonic triads in the key of A Major. Write each one in a different octave using whole notes. Use accidentals where necessary.



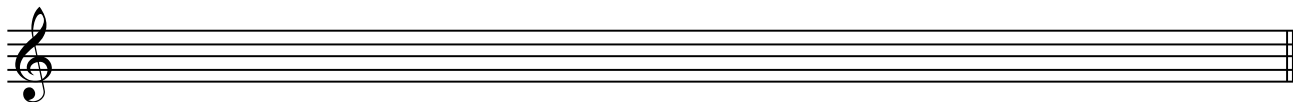
Chords Question 5

Using the treble clef, write a tonic triad for 7 different Major keys. Use a key signature for each triad and name the key on the line below.



Chords Question 6

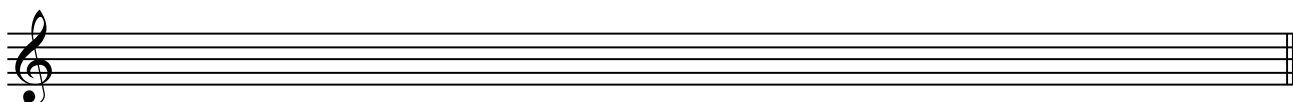
Using the treble clef, write two tonic triads in the key of D Major and two tonic triads in the key of E^b Major. Write each one in a different octave using whole notes. Use key signatures.



Keys – Supplementary Sheet 5. Melodic Minor Scales.

Keys Question 1

Using the treble clef, write one octave, ascending and descending, in minims, of C melodic minor.



Keys Question 2

Write the name of this scale and label the intervals between each pair of adjacent notes (using "tone" or "Major 2nd" etc) in the scale below.

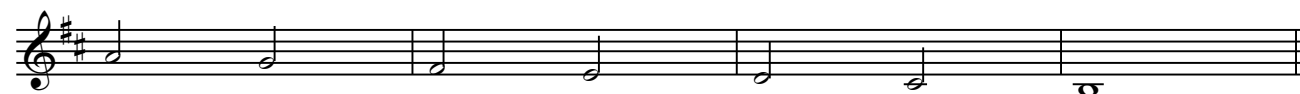
Scale name: _____



Keys Question 3

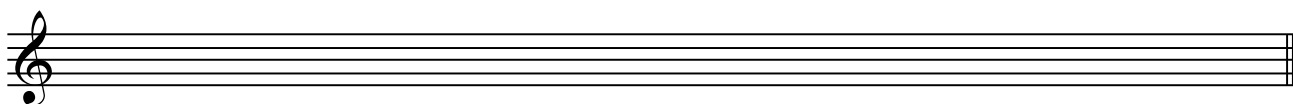
Write the name of this scale and label the intervals between each pair of adjacent notes in the scale below.

Scale name: _____



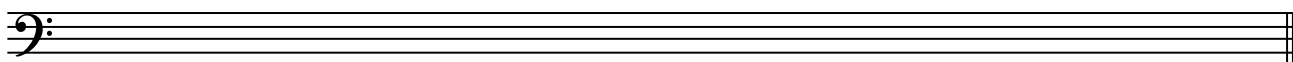
Keys Question 4

Write E melodic minor. Write in crotchets and use a key signature. Be sure to write the scale ascending and descending.



Keys Question 5

Write the melodic minor scale that is related to B^b Major on the given staff. Use semibreves.



Keys Question 6

Without a key signature (i.e. using accidentals to show the required sharps and flats), write the A melodic minor scale on the staff below. Write the solfa names of each note on the line below.

