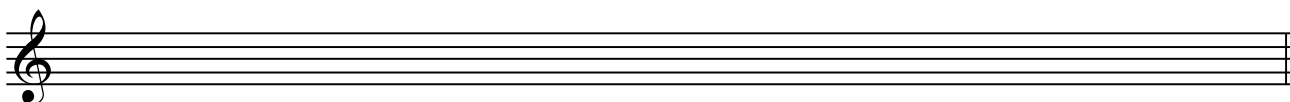


# Keys – Supplementary Sheet 11. Modes – Dorian

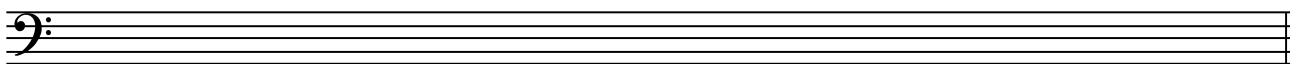
## Keys Question 1

Write the dorian mode, ascending and descending, beginning on D. Do not use a key signature.



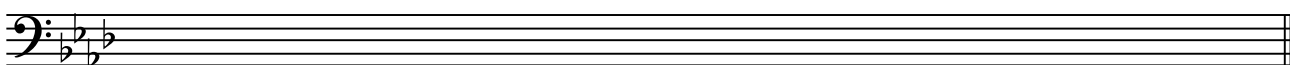
## Keys Question 2

Write the dorian mode that begins on C on the given staff. Use a key signature.



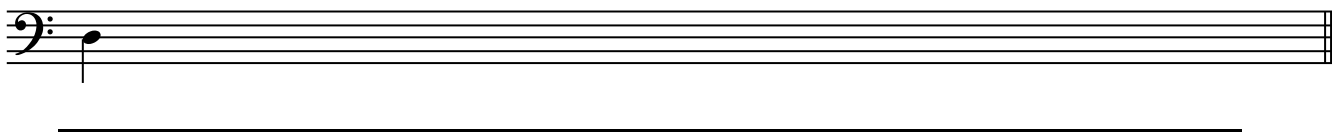
## Keys Question 3

Write the dorian mode with the following key signature.



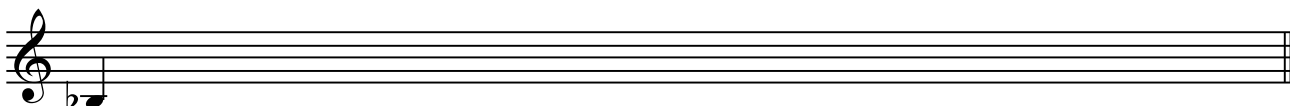
## Keys Question 4

In crotchets, write the dorian mode beginning on the given note. Beneath each pair of notes write the intervals created (i.e. tone or Major 2nd etc).



## Keys Question 5

Write the dorian mode beginning on the given note.



Study these melodies and if possible listen to it being played. Write the key it is written in on the line below.

## Keys Question 6



Tonality: \_\_\_\_\_

## Keys Question 7



Tonality: \_\_\_\_\_

## Keys – Supplementary Sheet 12. Diminished and Augmented triads.

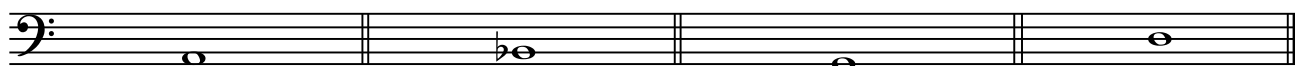
### Chords Question 1

Using your knowledge of interval patterns in a diminished triad, write a diminished triad on each given note.



### Chords Question 2

Using your knowledge of interval patterns in an Augmented triad, write an Augmented triad on each given note.



### Chords Question 3

Write the following triads on the given staff using accidentals where necessary.



B $\flat$  Major

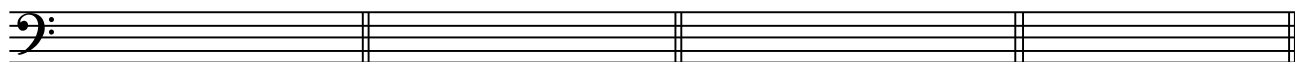
C minor

A dim

D $\flat$  Aug

### Chords Question 4

Write the following triads on the given staff using accidentals where necessary.



B $\flat$  dim

D minor

C $\sharp$  dim

E $\flat$  Aug

### Chords Question 5

Write the following triads on the given staff using accidentals where necessary.



F Aug

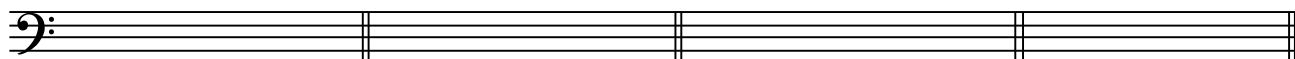
B $\flat$  minor

C Major

A $\sharp$  dim

### Chords Question 6

Write the following triads on the given staff using accidentals where necessary.



D Major

B dim

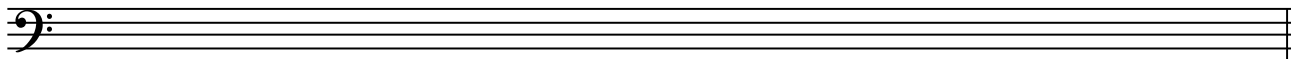
D $\flat$  Aug

A minor

## Keys – Supplementary Sheet 13. Modes – Lydian

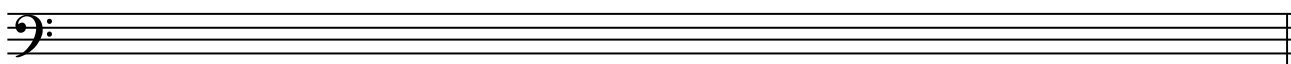
### Keys Question 1

In individual quavers, write the Lydian mode beginning on C. Use a key signature. (You will have to think of C as “fa” to work out the correct key signature).



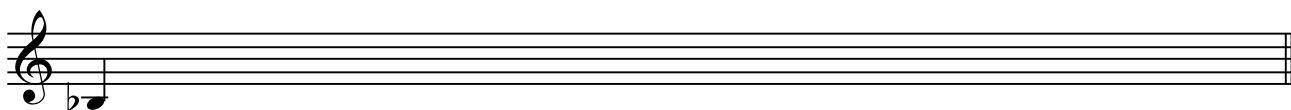
### Keys Question 2

Write the Lydian mode that begins on D on the given staff. Use a key signature.



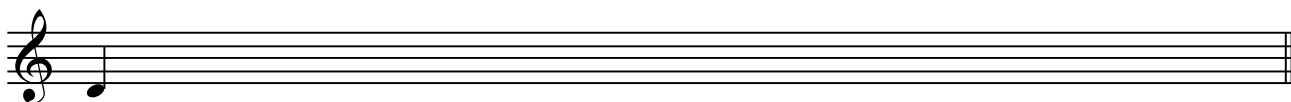
### Keys Question 3

Write the Lydian mode beginning on the given note. Do not use a key signature.



### Keys Question 4

In crotchets, write the Lydian mode beginning on the given note. Beneath each pair of notes write the intervals created (i.e. tone or Major 2nd etc).



### Keys Question 5

Study this melody and if possible listen to it being played. Write the key it is written in on the line below.



Tonality: \_\_\_\_\_

### Keys Question 6 - Scale Recognition (Aural)

Six scales will be played twice each. Name each scale as Major, harmonic or melodic minor, Mixolydian, dorian or Lydian.

1.

2.

3.

4.

5.

6.

# Chords – Supplementary Sheet 14. Triads in a Major Scale.

## Chords Question 1

Here are all the triads built on the notes of the Major scale. Beneath each one, write its Roman Numeral and quality. The first has been done for you.

I  
Major

## Chords Question 2

Write chord I in each Major key with the given key signatures.

## Chords Question 3

Write the dominant triad of each key written below, using accidentals where necessary.

B $\flat$  Major

C Major

D Major

## Chords Question 4

Here is the B $\flat$  Major scale with each notes tonal name written below. Create a triad above each note given.

Tonic    Supertonic    Mediant    Subdominant    Dominant    Submediant    Leading note    Upper tonic

## Chords Question 5

Write a triad on the note indicated, in the tonic keys indicated, using accidentals where necessary.

Mediant of C Major

Leading Note of D Major

Submediant of B $\flat$  Major

## Chords Question 6

Write a triad on the note indicated, in the tonic keys indicated, using accidentals where necessary.

Supertonic of B $\flat$  Major

Subdominant of D Major

Mediant of B $\flat$  Major

# Keys – Supplementary Sheet 15. Revision of Scales.

## Scales Question 1

Write the Lydian mode beginning on D. Use a key signature.



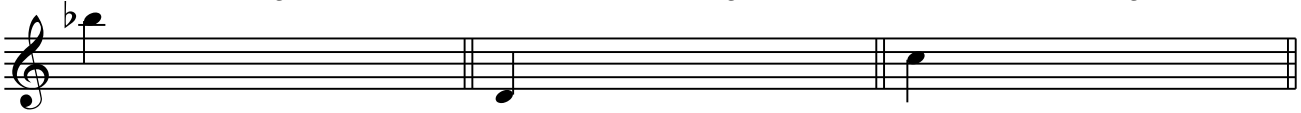
## Scales Question 2

Beginning from the tonic note indicated, write the following scale forms either ascending or descending as specified.

dorian  
descending

Mixolydian  
ascending

Lydian  
descending



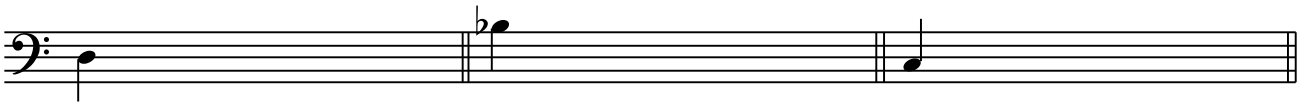
## Scales Question 3

Beginning from the tonic note indicated, write the following scale forms either ascending or descending as specified.

Mixolydian  
ascending

Major  
descending

melodic minor  
ascending



## Scales Question 4

Beginning from the tonic note indicated, write the following scale forms either ascending or descending as specified.

Lydian  
descending

dorian  
ascending

harmonic minor  
ascending



## Scales Question 5

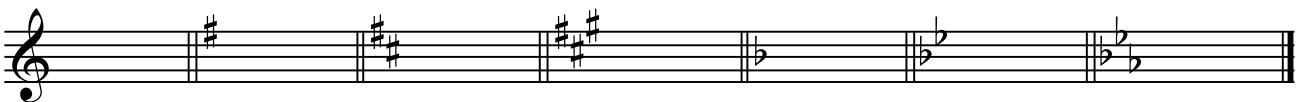
Write the Major keys with these key signatures below each bar.



---

## Scales Question 6

Write the melodic minor keys with these key signatures below each bar.



---

# Chords – Supplementary Sheet 16. Triads in a harmonic minor Scale.

## Chords Question 1

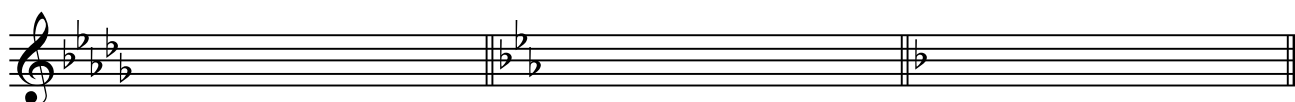
Here are all the triads built on the notes of the harmonic minor scale. Beneath each one, write its Roman Numeral and quality. The first has been done for you.



i  
minor

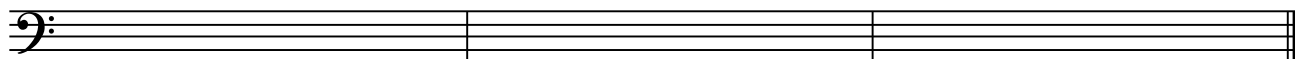
## Chords Question 2

Write chord i in each harmonic minor key with the given key signatures.



## Chords Question 3

Write the dominant triad of each key written below.



B $\flat$  minor

C minor

D minor

## Chords Question 4

Here is the B $\flat$  harmonic minor scale.

- Write the tonal name below each note.
- Create a triad above each note given and write the quality of each triad created on the second line below. The first one has been done for you.



Tonic  
minor

## Chords Question 5

Write the chords indicated below.

G -Min

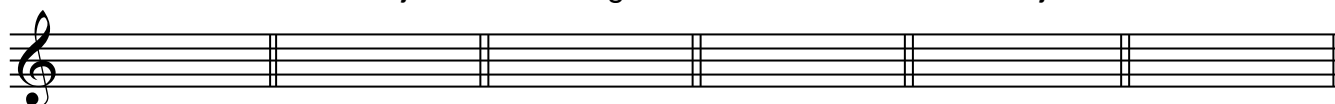
B $\flat$  -Maj

D $\flat$  -Aug

B -dim

A -Maj

A -min



B $\flat$  -Min

C -Maj

E $\flat$  -Aug

D -dim

G -Maj

D -Maj

